



Climate Roadmap

# NET ZERO BY 2050

---

Macure's pathway to reducing greenhouse gas emissions across our value chain

Macure · March 2026

# Building a structured and credible pathway towards net zero

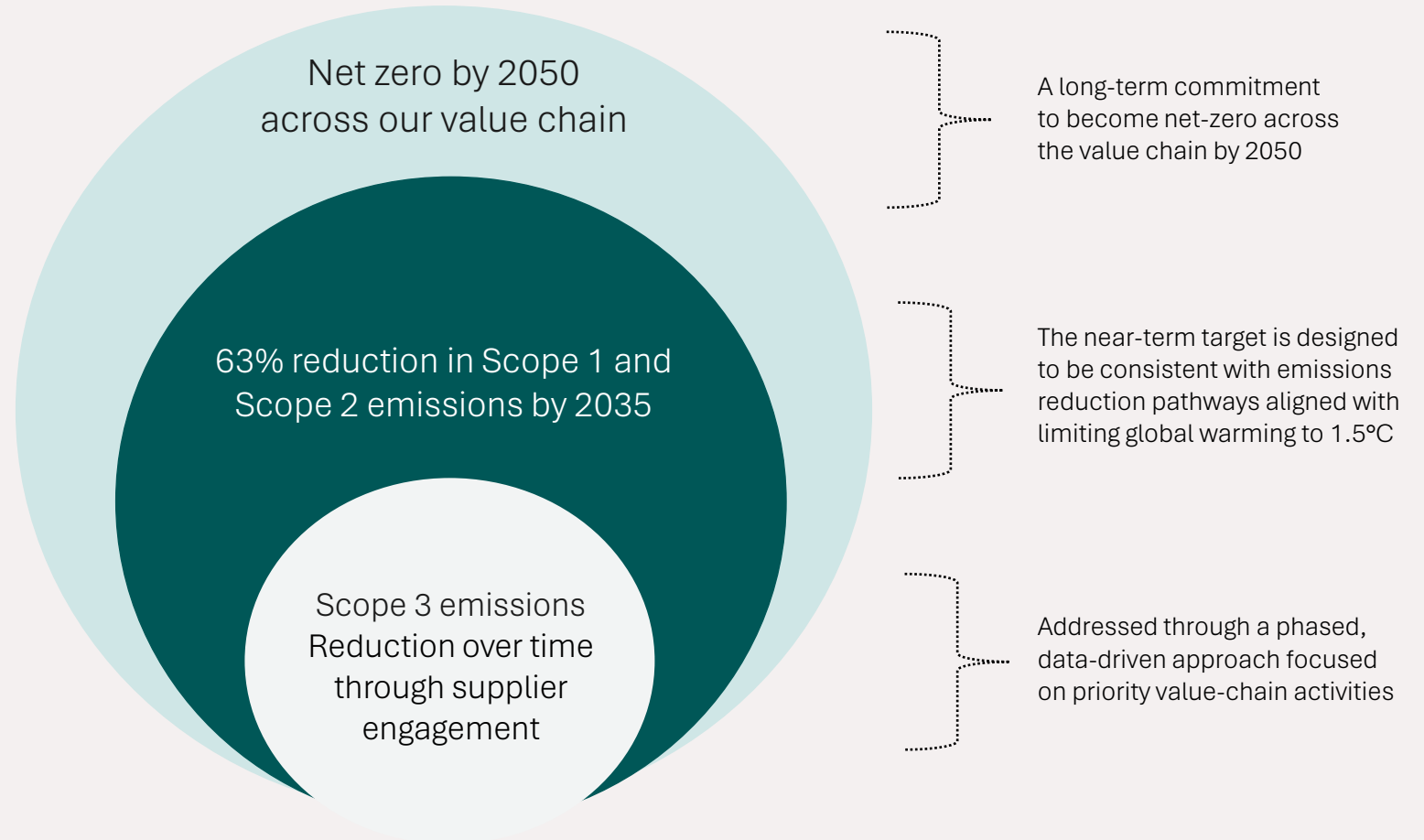
Macure is committed to supporting the transition towards net-zero greenhouse gas emissions by 2050. This roadmap summarises our climate ambition, near-term priorities, and the foundations we are building to address emissions across our value chain over time.

This climate roadmap explains how Macure is building a clear and transparent foundation for understanding and reducing our climate impact over time. Our approach is aligned with recognised international frameworks and is designed to evolve as data quality, governance, and ambition mature.

In 2026, Macure will calculate its global greenhouse gas emissions across Scope 1, Scope 2, and Scope 3, using 2025 as the baseline year. This will form the basis for future emissions reduction targets.



# Our climate targets



# Focused on the areas with the greatest climate impact

Scope 3 emissions are expected to represent a significant part of Macure’s overall climate impact, as they occur across the value chain.

Our reduction strategy therefore prioritises value chain emissions, with a focus on purchased goods and services, upstream transportation, and other emission-intensive value-chain activities. In practice, this means working closely with key suppliers to improve data quality and reduce emissions over time.

Macure applies a phased approach, strengthening data quality and supplier engagement as the basis for progressive emission reductions over time.



**Value chain emissions (Scope 3)**  
Primary reduction focus

**Operational emissions (Scope 1 & 2)**  
Directly influenced emissions



Scope 1 and Scope 2 emissions relate to Macure’s direct operations and purchased energy.

Scope 1 emissions are expected to be limited in nature, while Scope 2 emissions are addressed through energy-efficient office operations and the use of renewable or low-emission electricity where available.

**Data, governance & engagement**  
Enabling long-term reductions



Macure applies the GHG Protocol Corporate Standard as the foundation for its climate work, strengthening data quality, governance, and partner engagement to enable credible emissions reductions over time.

Macure monitors operational energy use over time to support continuous improvement and future reduction targets.

# Science Based Targets initiative (SBTi) target validation planned for 2027

Macure will establish a complete global emissions baseline in 2026 and will submit its climate targets for validation under the Science Based Targets initiative (SBTi) in 2027.

